



www.flitetest.com

FT Mini Guinea

Recommended electronics:

- 2200kv 250 size motor
- 12 amp ESC minimum
- 500-1000 mAH 3s
- (4) 5 gram servos

Throws:

- 16° deflection
- Expo 25%

Weight Without Battery:

9 oz (256 g)

Recommended Prop:

5 x 3 prop minimum

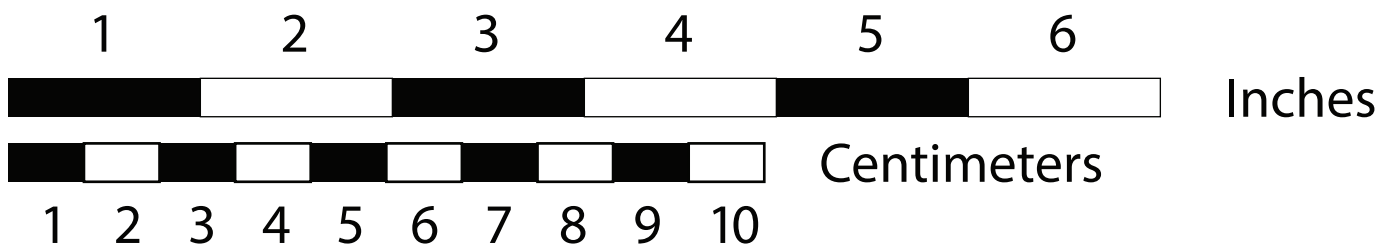
black = cut

red = score 50%

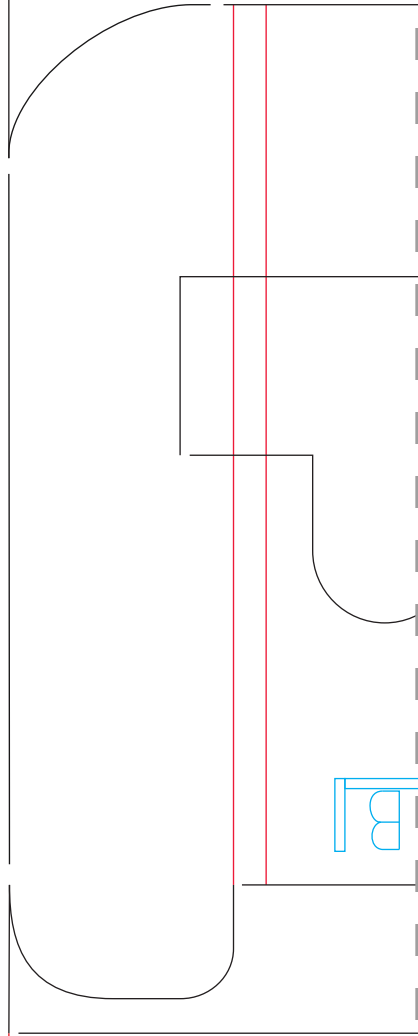
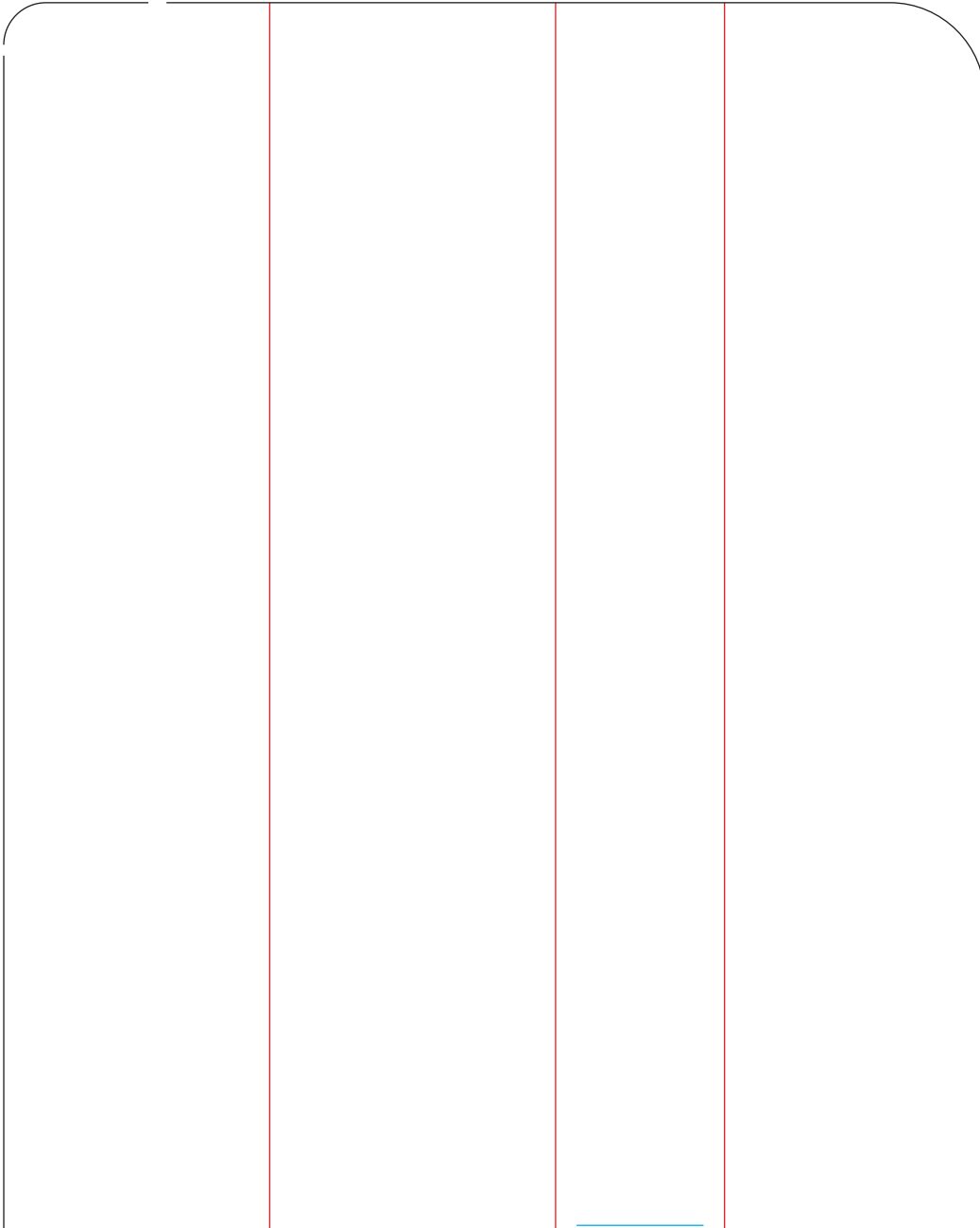
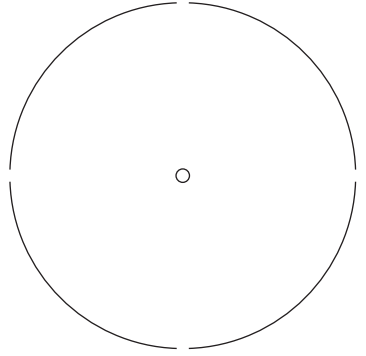
blue = lightly crease

Tiled plans dimensions:

1	2	3	4	5	6	7	8
9	10	11	12	13	14	15	16

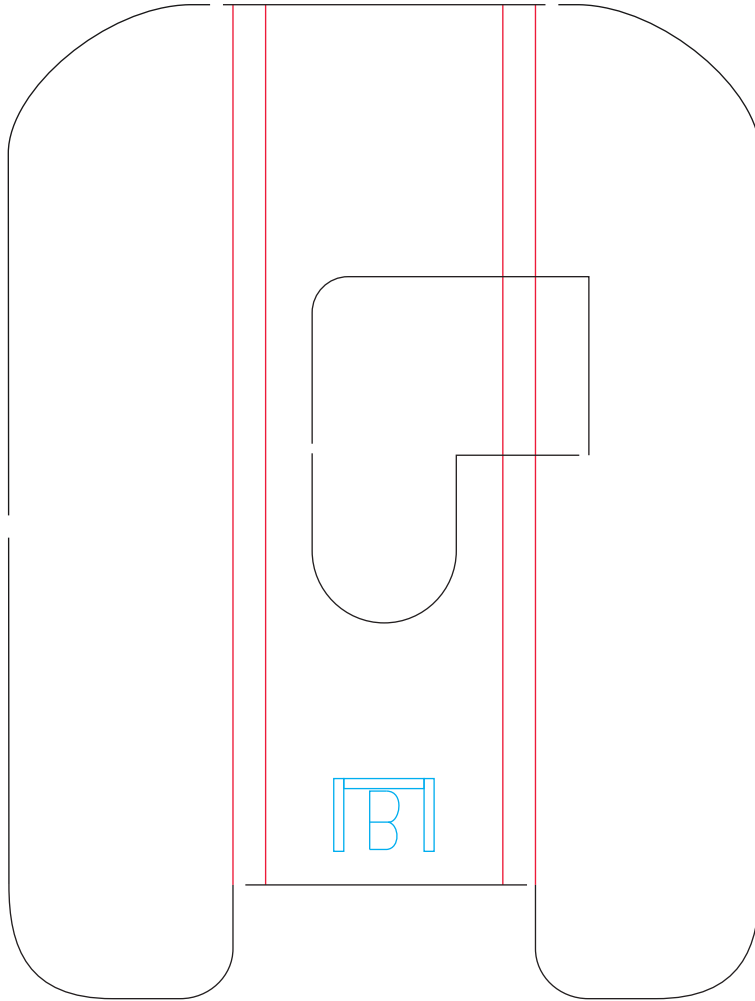
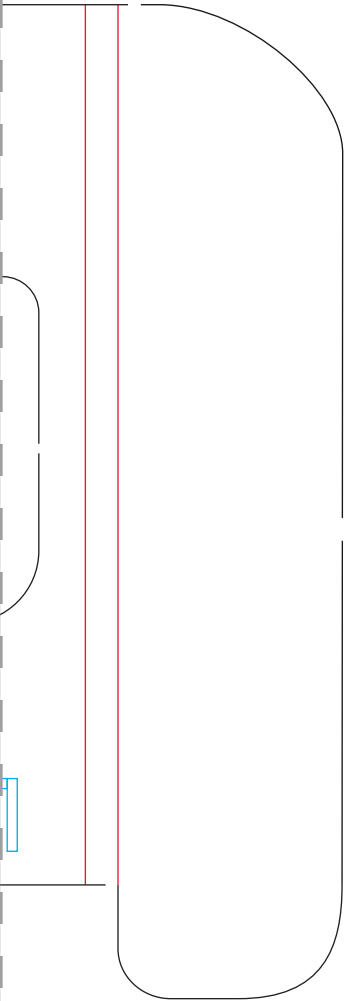
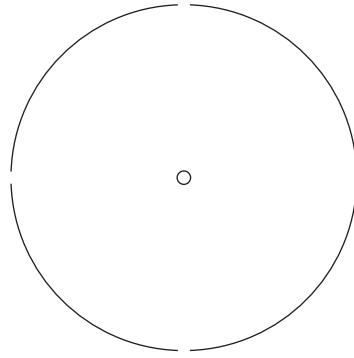
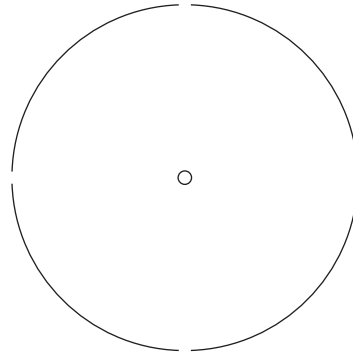
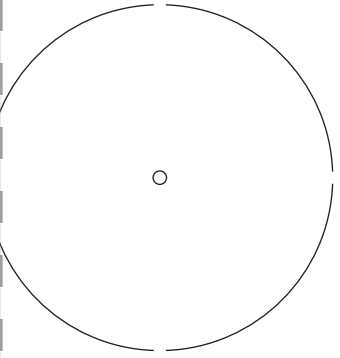


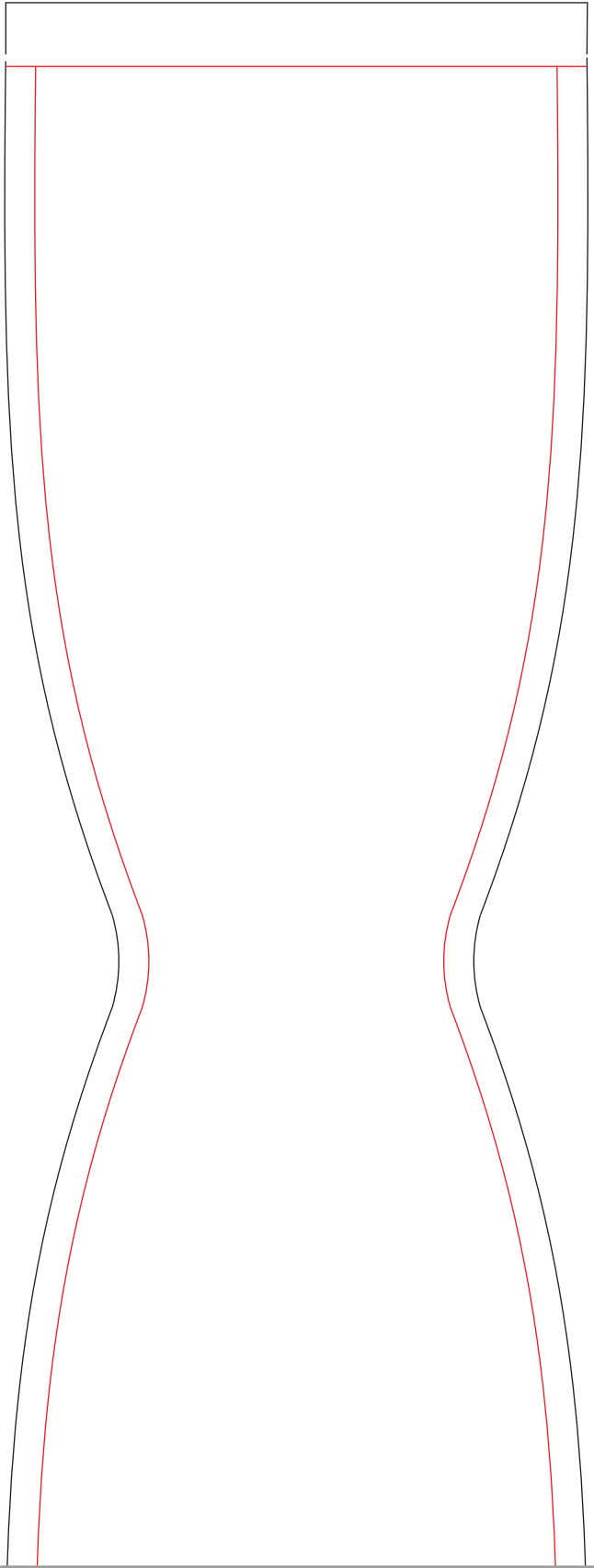
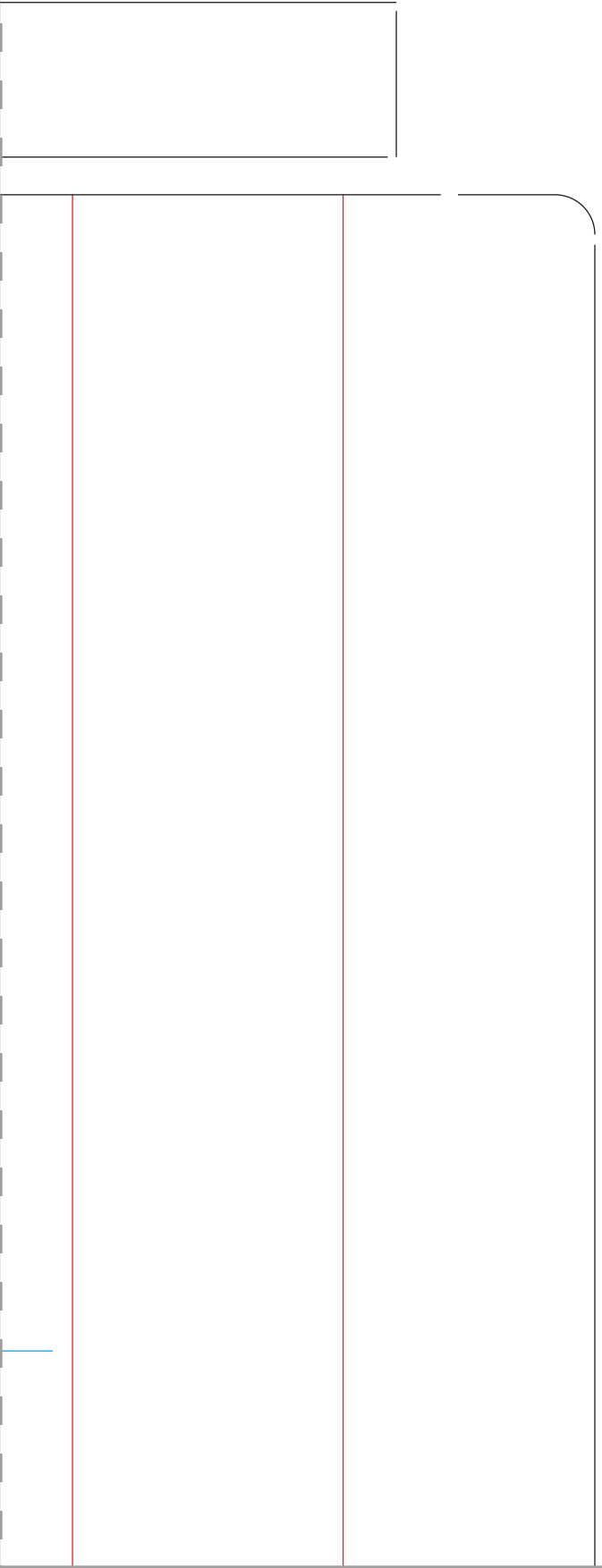
Design By: Peter Sripol

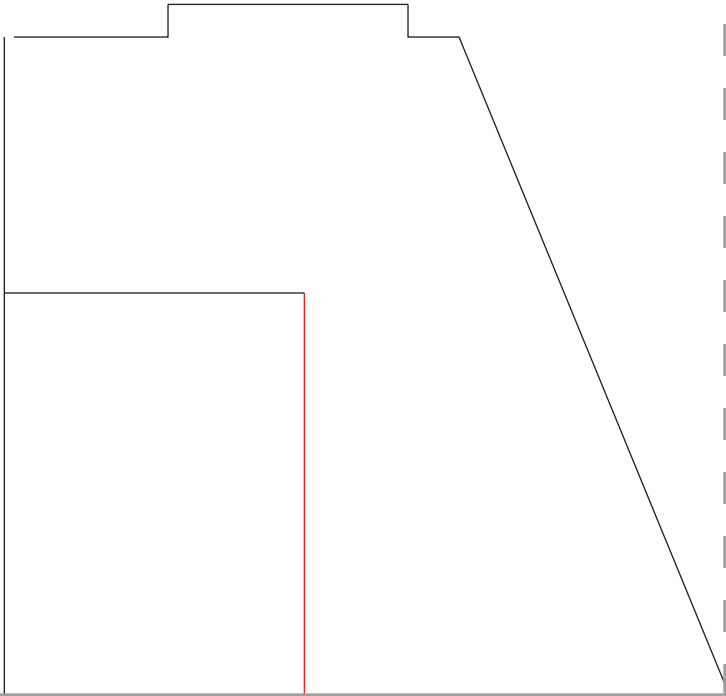
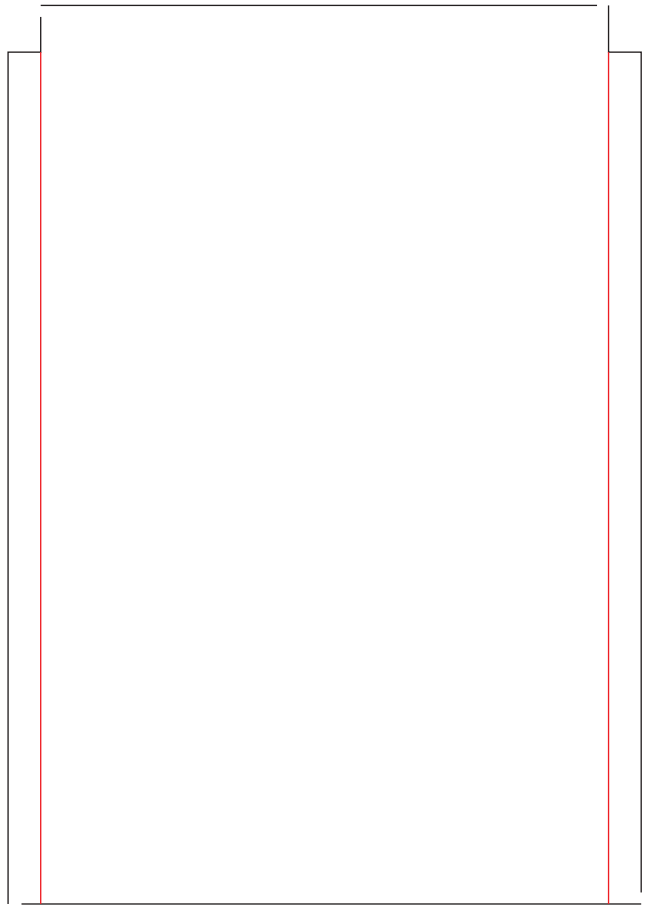
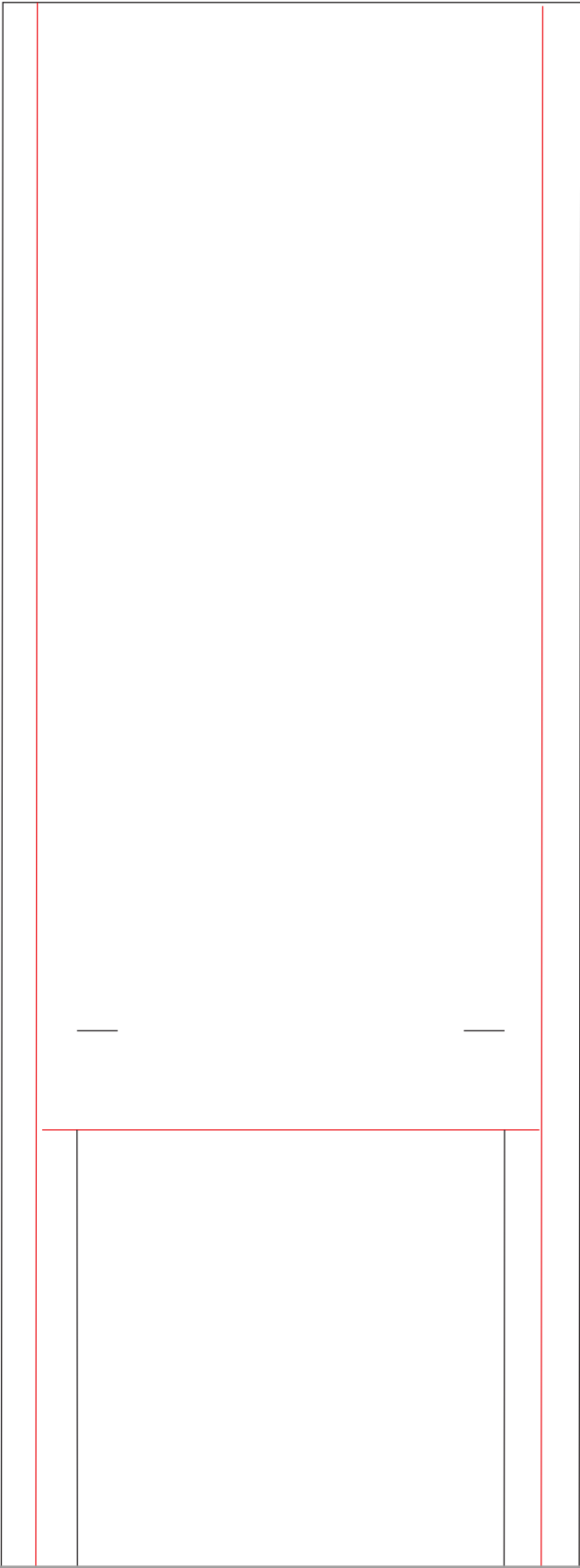


Bl



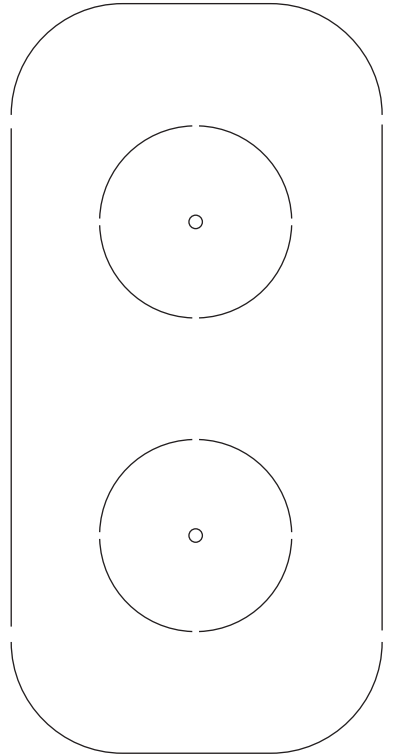




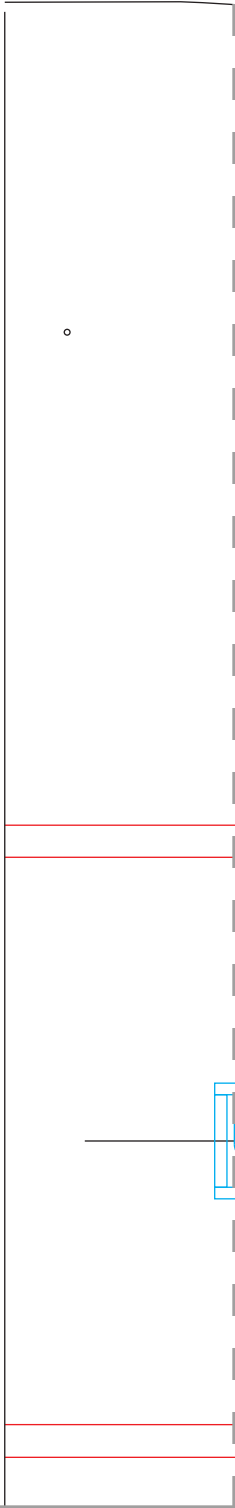
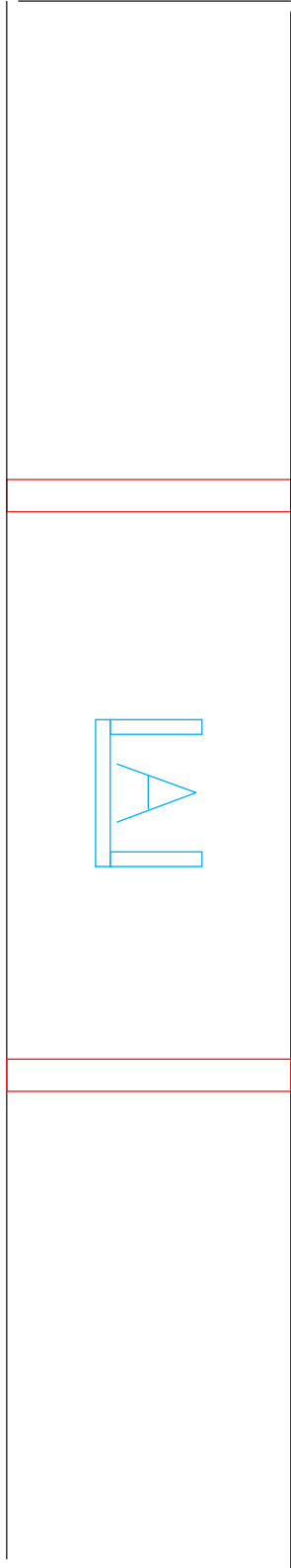
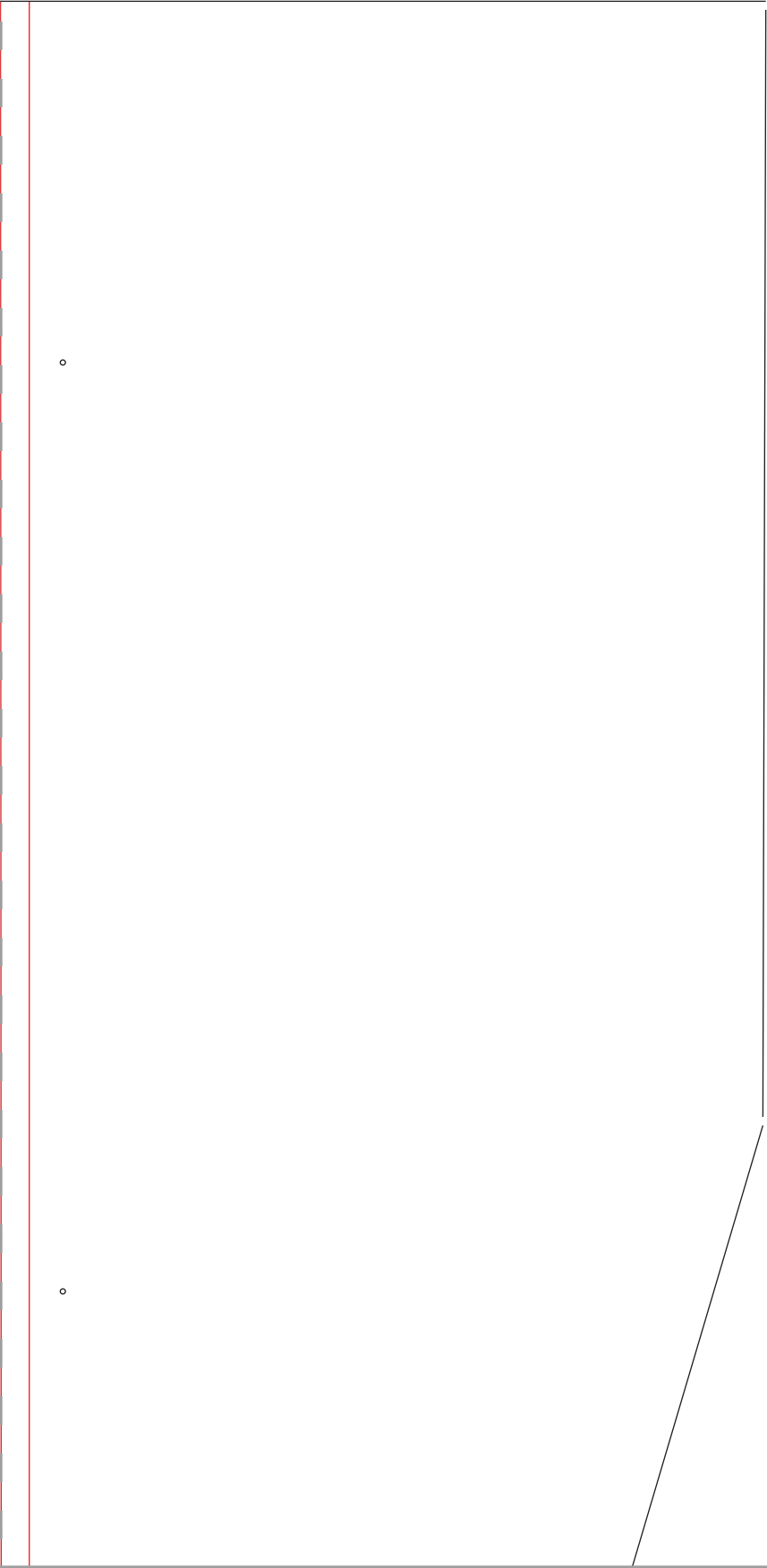


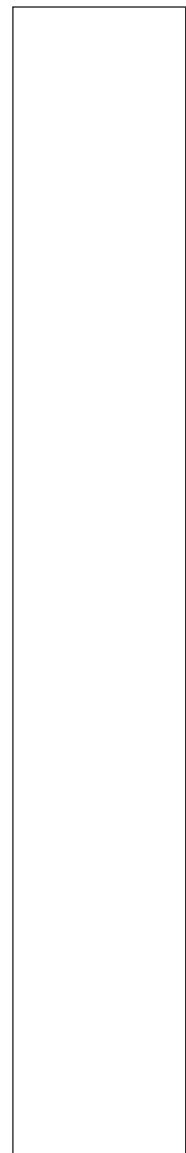
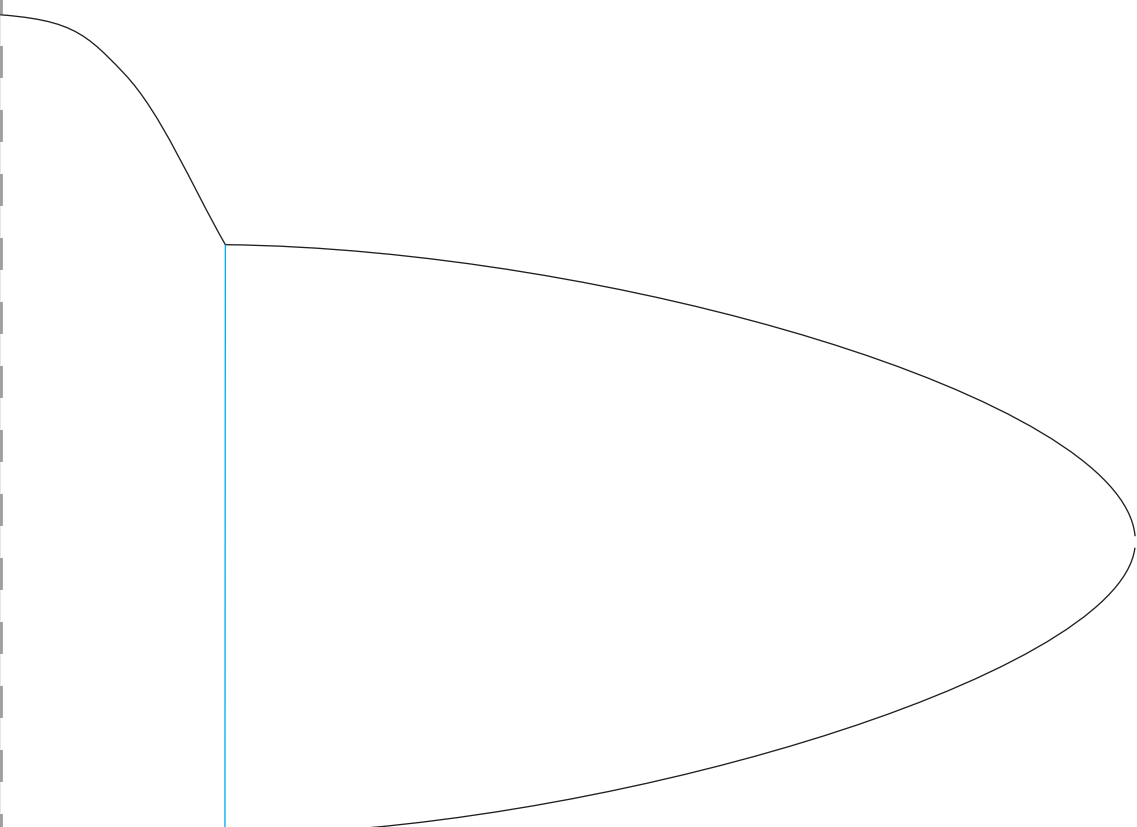
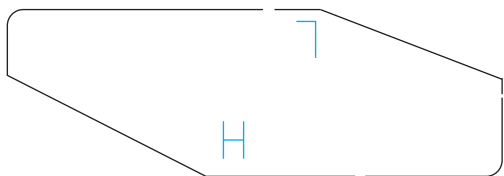
B

o

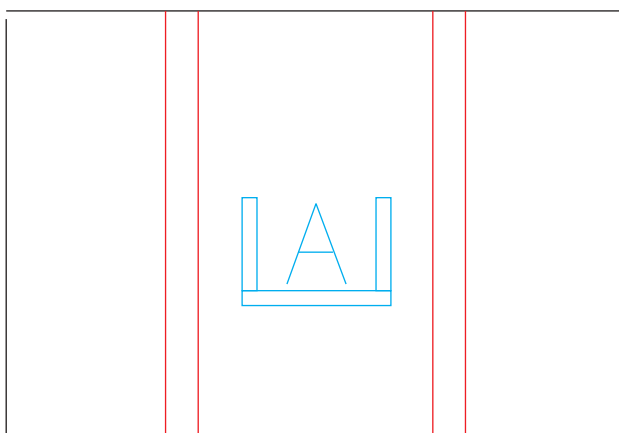
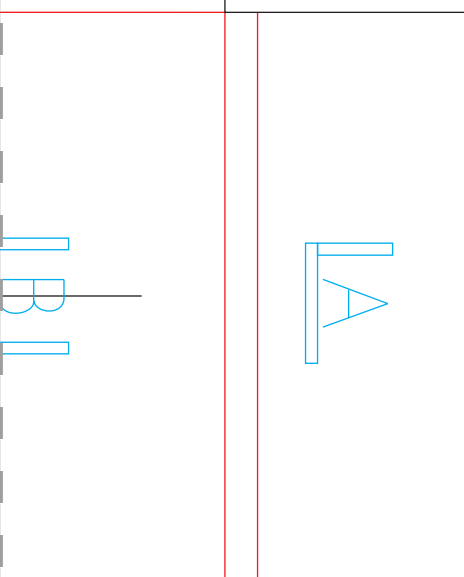


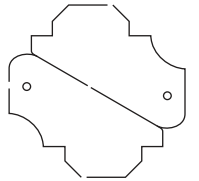
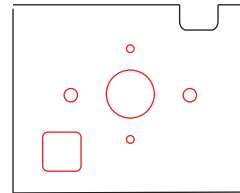
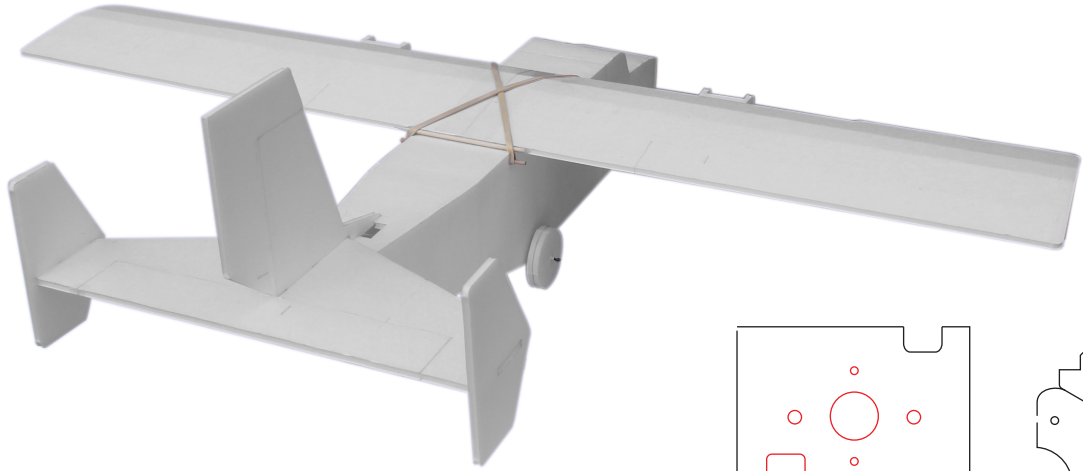
o





Posterboard





Firewall/Control horns

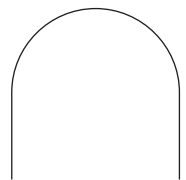
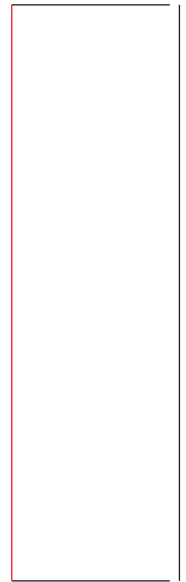
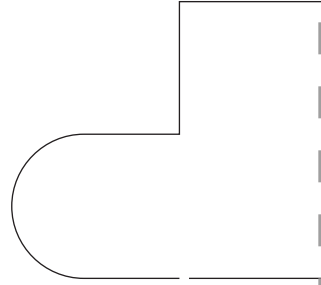
$\frac{1}{16}$ " Inch thick

(1.5mm)

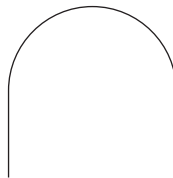
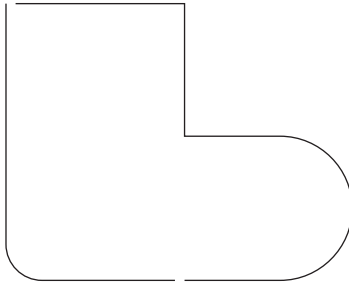
Hobby Plywood

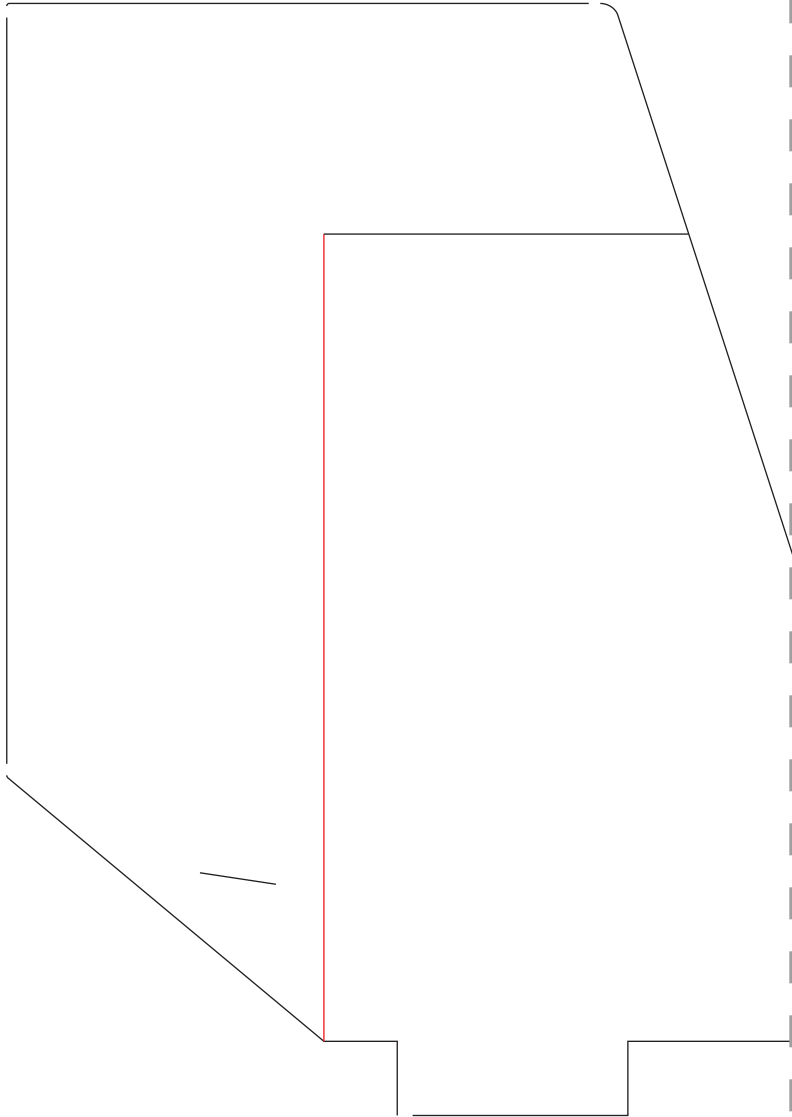


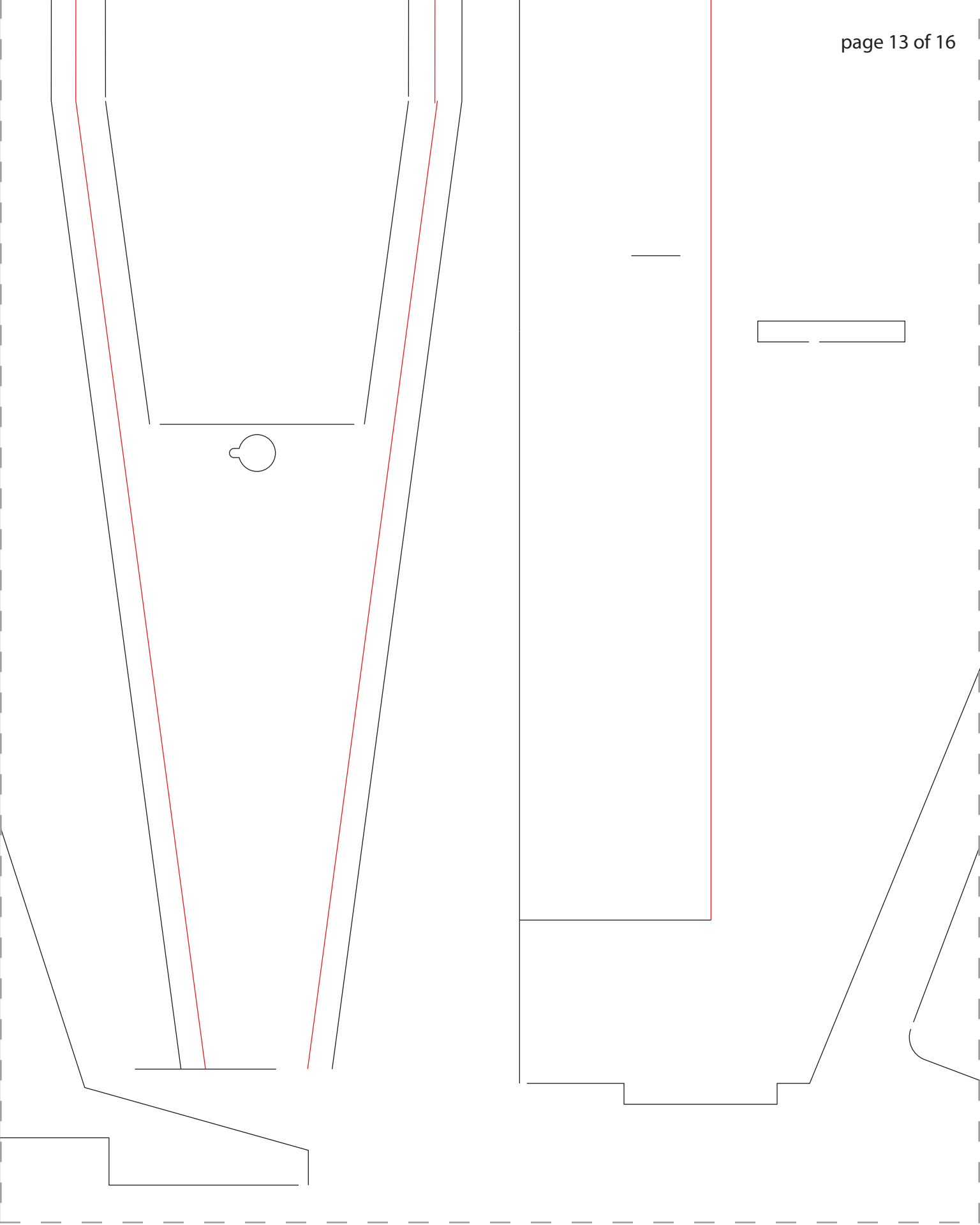
—

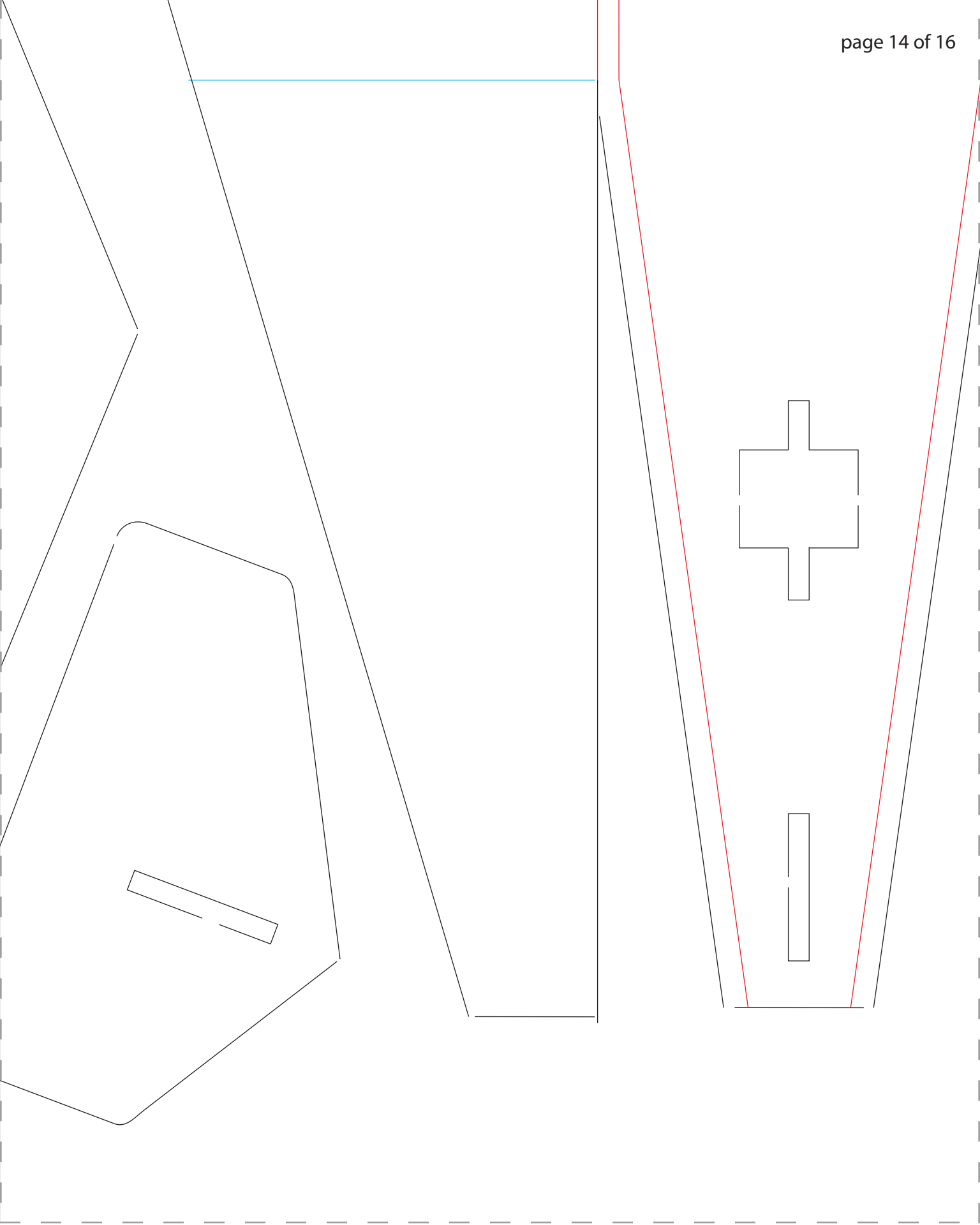


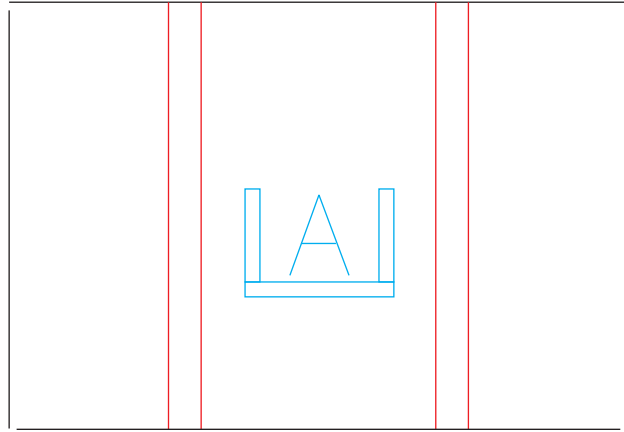
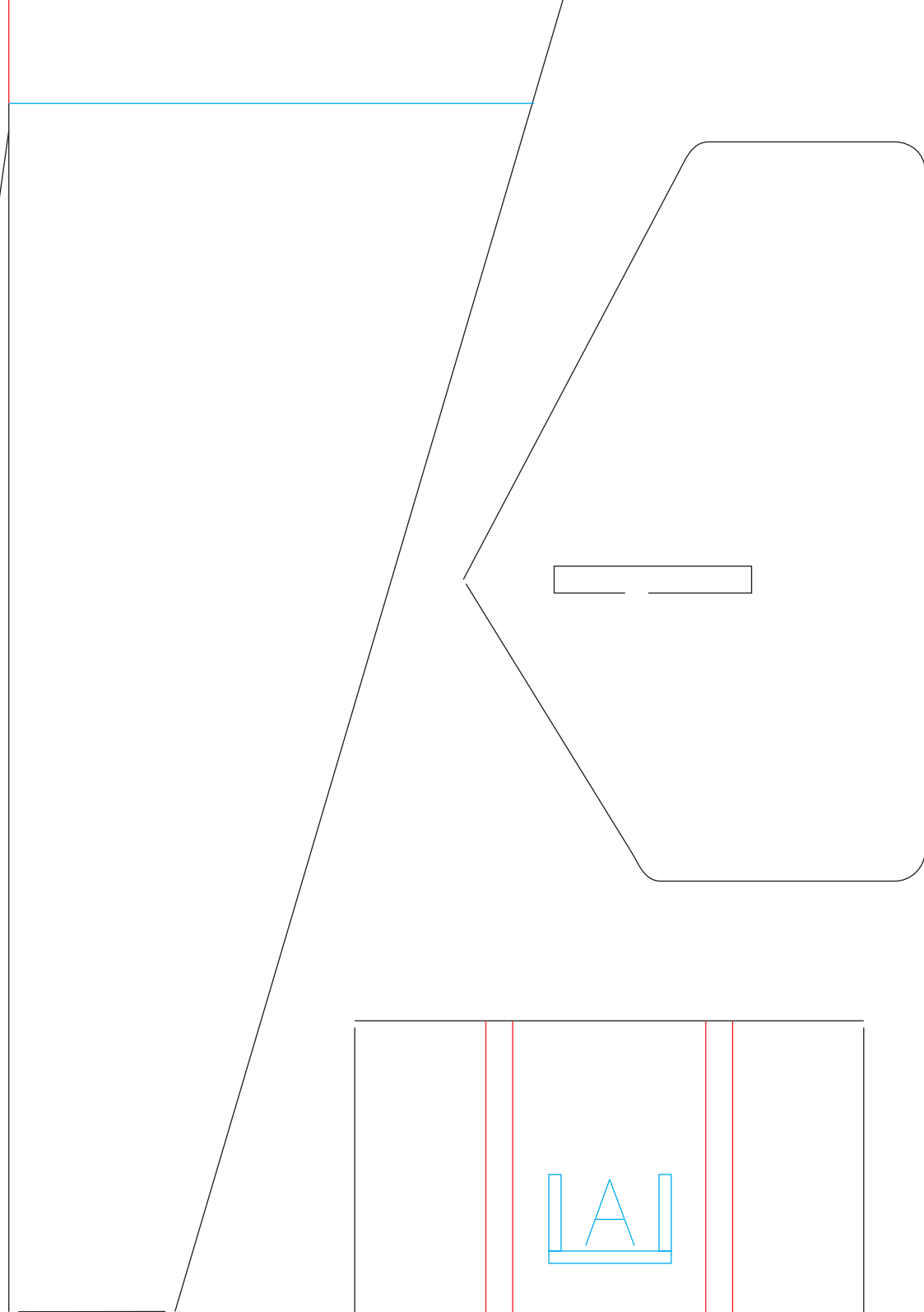
—











o

o

